

Welcome to GSES Open House!

Goldsmith-Schiffman Elementary School



Haley James

Principal



Courtney Wells

President



Agenda

- About the GSES PTA
- Visit the PTA Website and Upcoming Dates
- Membership, Grandparent's Club & P.O.Ps
- Academics and Reflections Contest
- Fundraising and Fit & Fun Run
- Hospitality & Events
- PTA Budget Review
- Community Partners



What is PTA and why join?



- **PURPOSE**
 - To make every child's potential a reality by engaging and empowering families and communities to advocate for children.
- **CHILDREN BENEFIT**
 - Research shows that participating in your child's school correlates to them doing well academically.
- **THE SCHOOL BENEFITS**
 - Your support helps us support the students, staff, and families in lots of different ways.
- **MAKE CONNECTIONS**
 - Get to know the teachers and staff as you partner with the school.
- **BE INVOLVED**
 - Socializing with other parents while volunteering is fun and rewarding.

National PTA School of Excellence Renewal 2025

Proud to be a
**National PTA®
School of
Excellence**

2022-2024



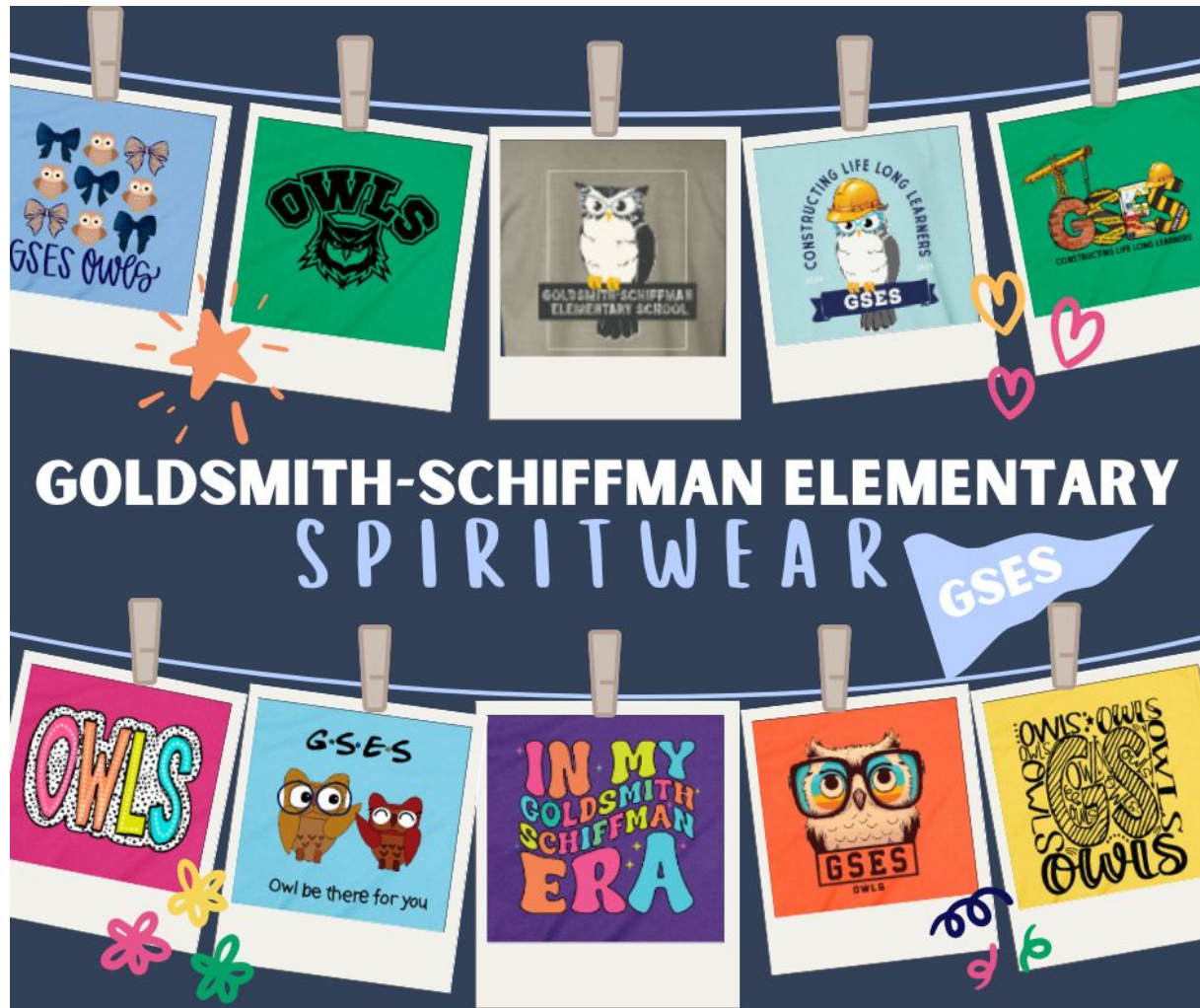
SCHOOL OF EXCELLENCE



The Goldsmith-Schiffman Elementary School PTA knows that a strong partnership among our families, school leaders, and community members is important to the success of our students and school. That's why we are participating in the National PTA School of Excellence program, which grows partnerships between PTAs and schools to enrich the educational experience and overall well-being of all students.

As a National PTA School of Excellence, families feel welcomed and empowered to support student success, and PTA is a key partner for continuous school improvement. We feel Goldsmith-Schiffman Elementary School and GSES PTA can achieve that together—and the result will be national, state and community-wide visibility for the positive impact we are making together at Goldsmith-Schiffman.

We need your help! As part of the process, National PTA requests feedback from families, administrators, and teachers at two points in the school year—the beginning and the end. Your feedback will help us improve our family-school partnership and achieve excellence.



GOLDSMITH-SCHIFFMAN ELEMENTARY SPIRITWEAR



SCAN
HERE TO
ORDER

Elizabeth Davey

Secretary



GSES PTA Website



www.gsespta.org



Become a Member



Find Volunteer Opportunities



Answers to FAQs



Staff Info Sheets



PTA Contact Information



Stay Up To Date



facebook.com/gsesowls



facebook.com/groups/gsesparents

Check out our Grade Level Specific Pages as well!



GOLDSMITH-SCHIFFMAN ELEMENTARY PTA

Sunday Send Out

Sign up for the weekly email
newsletter, The Sunday Send
Out, on our PTA Website



Upcoming PTA Events

UPCOMING

PTA EVENTS SEPTEMBER

5-6

SEPTEMBER

GRANDPARENTS
BREAKFAST

13

SEPTEMBER

DUTY FREE
LUNCH

17

SEPTEMBER

ACADEMIC NIGHT

20

SEPTEMBER

FIT AND FUN
RUN

FOR MORE INFO: [GSESPTA.ORG](https://www.gsespta.org)

UPCOMING

PTA EVENTS OCTOBER

9

OCTOBER

ACCELERATED
READER STORE

11

OCTOBER

FIT AND FUN
RUN AWARDS

18

OCTOBER

BOO BASH

FOR MORE INFO: [GSESPTA.ORG](https://www.gsespta.org)

Ashton Brown

VP of Membership

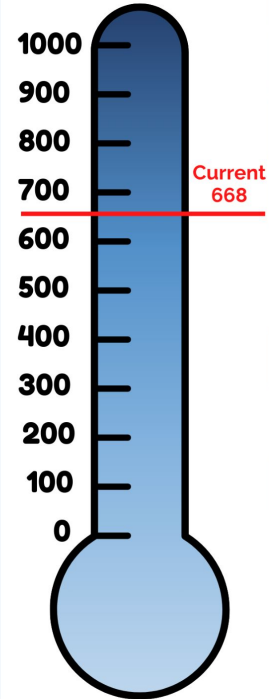


Current Membership Update



GSES PTA MEMBERSHIP NUMBERS

2024-2025 School Year



Big Topper Award

More than 1,000 members!

100% Membership

1 membership per student (928)

Oak Tree

Over 20% from previous year (966)

Gold Leaf

Meeting or exceeding last year (805)

Early Bird MET!!

Over 50% of previous year by Oct. 1 (403)

Golden Apple

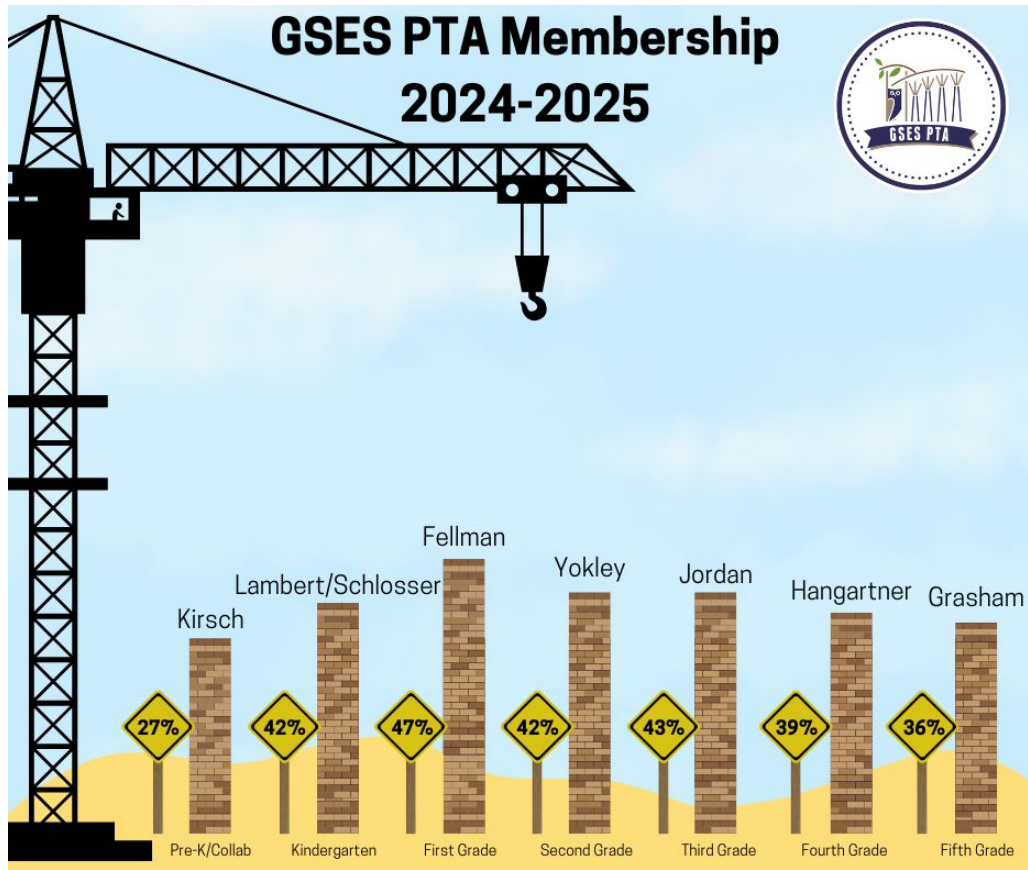
All certified staff are PTA members



GSES PTA Membership 2024-2025



FIRST CLASS IN EACH GRADE WHO
REACHES 100% MEMBERSHIP
ALSO EARNS A PIZZA PARTY!



EVERY CLASS WHO REACHES 100%
MEMBERSHIP EARN A POPCORN
AND MOVIE PARTY!

Current Grade/Class Status



SLIME
MRS JAMES

**WHEN WE REACH
100% MEMBERSHIP**

Support Us With
Your Membership!



Join The
GSES PTA

**SCAN
ME**



Grandparents Club

Volunteer:

- o Book Fair/Library
- o Lunch Helpers
- o Fit & Fun Run
- o Boo Bash
- o Merry Market
- o Spring Fling
- o Landscaping

Stay In Touch

- o Website: www.gsespta.org/grandparents
- o Email: grandparents@gsespta.org
- o Facebook: www.facebook.com/groups/gsesgrandparents
- o Grandparent Gazette
- o Grandparent Club Meet & Greet:
September 25 - more info to come!

Grandparents Breakfast




**GRANDPARENTS
BREAKFAST**

WHEN:
September 5 or
September 6 at
7:00am
YOU CHOOSE DATE!

**\$8 PER PERSON
INCLUDING
KIDS**

**PRE-PAY
ONLINE
ONLY**



**SPECIAL THANKS TO
Bojangles
FOR CATERING**



**GRANDPARENT'S
BREAKFAST
VOLUNTEERS
NEEDED!**

SIGN UP WITH QR CODE



*Parents can only attend if volunteering

Ashley Smith

P.O.Ps Chair



Proud Owl Papas (P.O.Ps)



ARE YOU A....
DAD?
GRANDFATHER?
UNCLE?
FATHER FIGURE?



WE NEED YOUR HELP!

GSES Proud Owl Papas (POPs) Program

PROVIDING STUDENTS
ADDITIONAL MALE ROLE
MODELS AT SCHOOL

EVERY FRIDAY IS POPs DAY!!

MORNINGS/AFTERNOON
1 HOUR, 2 HOURS, HALF DAY
OR ALL DAY!



SCAN HERE TO JOIN NOW!

WHAT DO POPs DO?



ASSIST IN CLASSROOMS

Each teacher will have a sign up sheet requesting support from our Pops each Friday!

The help could be anything from reading to the children, to helping assemble items around the classroom!

Since this is our pilot year for the program we are hoping for a great turn out which will lead into other areas our Pops can help out around the school!

****Please note all members must be added in PowerSchool prior to volunteering.**

The PTA appreciates you!

Samantha Bush

VP of Academics



Academic Support

- Accelerated Reader Store
- Educational Assemblies
- Reading Interventionist
- Reflections Contest
- Spelling Bee
- OWLsome Readers Program
- Butterfly Kits
- Space Camp Scholarships



GOLDSMITH-SCHIFFMAN ELEMENTARY
AND THE PTA PRESENT

ACADEMIC NIGHT:

HELPING STUDENTS SUCCEED

Join us on September 17 from 5-7 PM



Door
prizes from
the PTA!

Choose
your
sessions!

Pizza and
drinks for
purchase!

RSVP Here:



- Sessions about various topics such as reading, writing, dyslexia, math skills
- YOU CHOOSE YOUR SESSIONS!
- Elementary school-aged children will play supervised in the gym
- Younger children will need to stay with their adult or arrange for childcare
- Every student will go home with a new keychain of their choice!

Reflections Contest

- The PTA Reflections Program is designed to enhance quality arts education.



DANCE
CHOREOGRAPHY



FILM
PRODUCTION



LITERATURE



MUSIC
COMPOSITION



PHOTOGRAPHY



VISUAL ARTS

- Students in **ALL GRADES** are encouraged to participate.
- **Entries are due by September 26.**

For more information:

Please email Meredith at
gserreflections@gmail.com



Ashley Saager

VP of Fundraising




Fundraising

SUPPORT GSES WHILE YOU SHOP!



HOW TO SIGN UP:

- 1 Visit www.publix.com and Log In or Sign Up for a new account
- 2 Click  Account
- 3 Select "Perks & Coupons" then "Settings"
- 4 Scroll to find Publix Partners and search for Goldsmith Schiffman Elementary PTA
- 5 Pay with the Publix App or enter your phone number on the pin pad at checkout and Publix will donate a portion of your purchase to GSES!



EARN CASH FOR OUR SCHOOL

HERE'S HOW IT WORKS:



BUY BOX TOPS PRODUCTS

Earn for schools with the brands you love.



SCAN YOUR RECEIPT

Use the Box Tops app to submit your receipt within 14 days of purchase.



EARN CASH FOR SCHOOLS

Box Tops products are identified and earnings are credited online.



ONLINE SHOPPERS CAN EARN WITH BOX TOPS, TOO!

Whether you order groceries for delivery or pickup, shop through your store's app, or request an email receipt at checkout, you can earn for your school no matter where you shop.

SEE PRODUCTS & LEARN MORE ABOUT THE BOX TOPS APP AT ENTRICE.COM

DON'T HAVE THE BOX TOPS APP? GET IT NOW!



Link your Walmart account to earn without scanning!



Download the app or refer a friend for bonus Box Tops!

Fit & Fun Run

- PTA's Largest Fundraiser!
- Helps fund the events and programs we support
- How it Works/Changes
- Volunteers Needed

FUNDRAISING GOAL:
\$45,000



Old Way	VS	New Way
 Run around the small loop in the parking lot		 Run on the big track on school property
 Only top earners/lap runners receive prizes		 Everyone has a chance to earn prizes AND complete fun nightly challenges
 Free t-shirts sponsored by businesses		 Optional t-shirts purchased by families OR wear field trip shirt
 Lap counting and recording		 No lap counting and recording
 Running laps only		 Running AND stations like bubbles and inflatables
 Receive fundraising link		 Register on mybooster.com



Thank You to our Fit & Fun Run Sponsors!



Katie Arvidson

Broker



LIGHTVIND

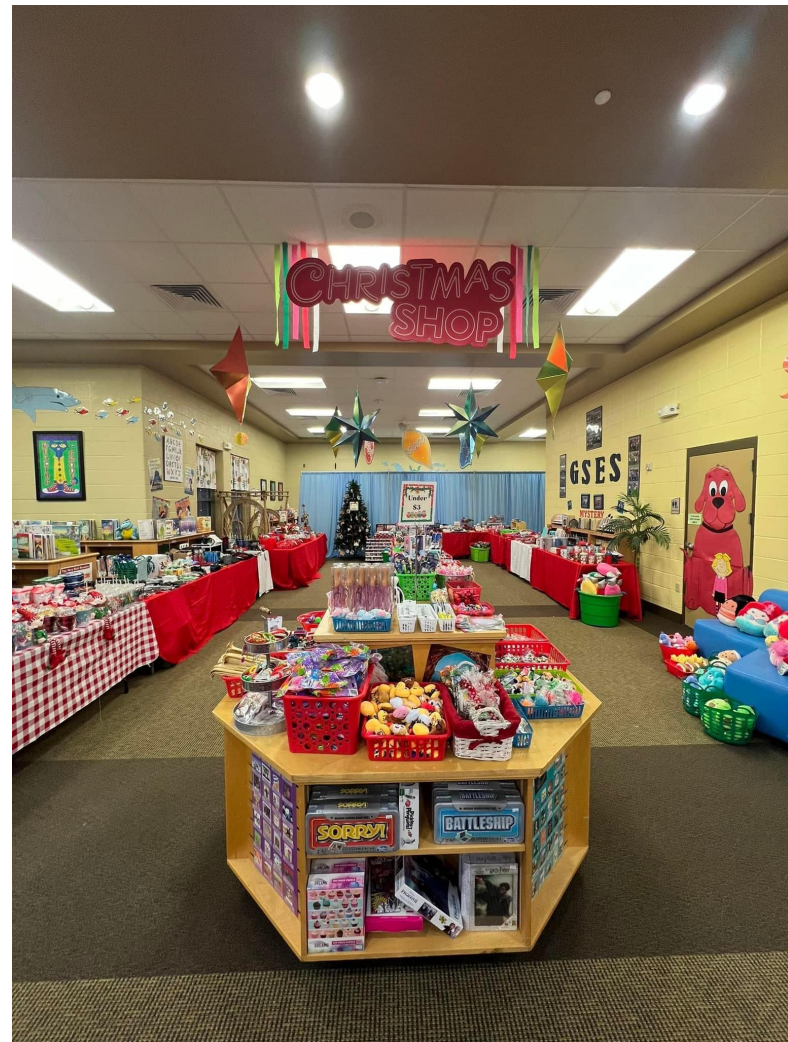


**The Sicard
Family**



Merry Market

- What is it?
 - An in-person shopping experience for GSES students to buy gifts for family members, friends, and even pets for the holiday season!
- It is the PTA's 2nd main fundraiser hosted from December 2-6.



Kristin Symon

Landscape Chair



Courtyard Project

- Outdoor Classroom
- Concrete area
- Seating areas
- New picnic area
- Garden areas
- Large Pergola walkway
- Rock riverbed drains
- Landscaping!



Pergola &
Picnic area



Concrete Area



Outdoor classroom



Courtyard Grants

- Bonnie Plants
 - 3rd grade giant cabbage program
- American Academy of Dermatology Association
 - Permanent Shade Structure
- Green our Planet Garden Connect
 - Support outdoor education and science experiments to learn about gardening, healthy eating, and healthy lifestyle.
- Jane R. parks memorial grant
 - Support horticultural and educational efforts as a previous member of Master Gardeners



Improved Test Scores

Changed Attitudes towards STEM

**Positive Mindset for
Nutrition & Health**

**Better Career
Opportunities**



Faye Dukes

VP of Hospitality & Events



PTA Events

A poster for a Halloween event titled 'BOO BASH'. The background is a light tan color. In the top corners, there are black spider webs. In the bottom left corner, there is a white ghost with a surprised expression next to several orange jack-o'-lanterns. In the bottom right corner, there is a small black bat flying. The text 'BOO BASH' is in large, white, outlined letters. Below it, the date and time 'October 18 6:00-8:30pm' are written in a smaller, black font. At the bottom, there is a line of text describing the event as an outdoor family event with various activities.

BOO BASH

October 18
6:00-8:30pm

outdoor family event with trunk
or treat, inflatables, petting zoo,
games, food trucks, and more!

A poster for a 'FAMILY DANCE' event. The background is black. In the top left corner, there are three yellow stars. In the top right corner, there is a vertical pink and white checkered pattern. In the bottom right corner, there is a green and white checkered pattern. The text 'FAMILY DANCE' is in large, bold, pink and yellow letters. Below it, the date 'APRIL 4' is written in large, bold, blue letters. In the center, there are three cartoon children dancing. A girl with brown hair is on the left, a boy with dark hair is in the middle, and a girl with blonde hair is on the right. There are several small yellow musical notes floating around them.

FAMILY DANCE

APRIL 4

A poster for a 'SPRING FLING' event. The background is light blue. In the top left corner, there is a large yellow sun with rays. In the top right corner, there is a white cloud. The text 'SPRING FLING' is in large, bold, green letters. Below it, the text 'Outdoor Field Day Event' is written in a smaller, black font. In the center, there is a green hill with three red cones and several colorful hula hoops. In the bottom left corner, there is a white box with a pink border containing the date 'Friday, May 2'. In the bottom right corner, there is a line of text describing the event as an at-school event that includes competitive field day games.

SPRING FLING

Outdoor Field Day Event

Friday, May 2

Spring Fling is an at-school event that
includes competitive field day games.

PTA Hospitality



- Monthly snack cart for the GSES Staff
- Donations needed to make it successful

**THIS BRIGHTENS THE
STAFF'S ENTIRE DAY!**



STAFF APPRECIATION

THROUGHOUT THE YEAR

Will highlight and
appreciate staff
members throughout
the year



STAFF APPRECIATION WEEK

May 5-9, 2025

The PTA loves spoiling
the staff during this
week

Students have the
option to bring in gifts
and sweet notes

Julie Berry

Treasurer



What the GSES PTA Supports:



- **Special Events:** Boo Bash, Spring Fling, Grandparents Breakfast, Family Dance, 5th Grade Picnic & Farewell, Open House
- **Teacher & Staff Support:** Funds for class materials and supplies, Wishes Grants
- **Academic Support:** AR Store, Grade level programs, Educational Assemblies, Kindergarten Parent Night, Space Camp Scholarships, Spelling Bee
- **School Support:** Landscaping, 5th Grade Legacy Project, Gold Rally, Hospitality, Recess Items, Volunteer Appreciation



Check out
some of
our events
and
programs!



**GRANDPARENT'S
BREAKFAST**



BOO BASH



**STUDENT
PROGRAMS**



**SPELLING
BEE**



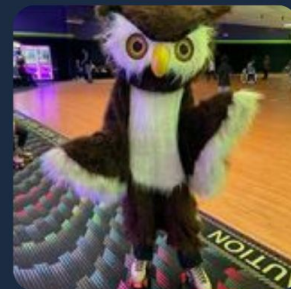
**FAMILY
DANCE**



**STAFF
APPRECIATION**



**MERRY MARKET
HOLIDAY SHOP**



**FAMILY SPIRIT
NIGHTS**

PTA Budget

CATEGORY	BUDGETED INCOME	BUDGETED EXPENSES
MEMBERSHIP	\$5,000	\$4,090
FUNDRAISING	\$90,900	\$20,000
SPECIAL EVENTS	\$17,500	\$24,550
TEACHER/STAFF SUPPORT	\$0	\$18,500
ACADEMIC SUPPORT	\$0	\$24,650
COMMITTEE/PROGRAMS	\$0	\$21,950
OPERATING EXPENSES	\$10,100	\$13,410
TOTALS	\$123,500	\$127,150

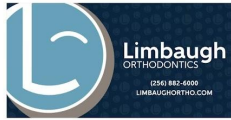
Carrie Zoubek

VP of Community Partners



COMMUNITY PARTNERS

2023



2024



CALLING ALL BUSINESS OWNERS AND MANAGERS!

If you'd like to talk about a community partnership and advertising for your business, please contact us!



EMAIL OR CALL CARRIE ZOUBEK

communitypartners@gsespta.org

703.231.5049



Thank You for Attending GSES Open House!

3rd-5th Graders may visit their classrooms

